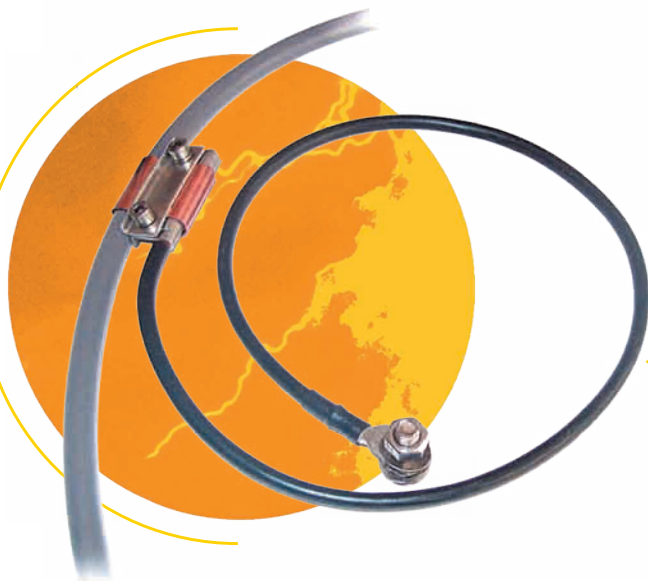




Grounding Kit

KMT



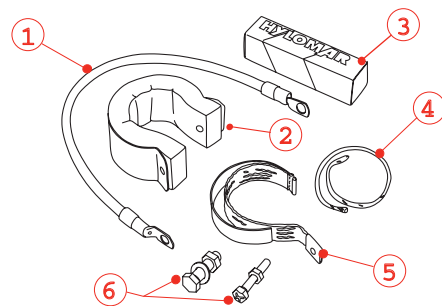
The grounding kit provides a correct electrical contact between the coaxial cable outer conductor and the grounded structure, facilitating the flow of electrostatic or lightning disturbances, and avoiding by this way destructive sparkovers.

The grounding kit is installed on the RF cable. It is connected by wire to the close metallic structure (poles, grounding plate). It is recommended to use 2 or 3 kits for each feeder cable, one on the top and one at the bottom of the pole and an other kit on the entrance of the shelter.

The KMT features a large covering to provide excellent and long duration electrical contact and good mechanical withstand. The grounding kits are available for most of the coaxial cables and are supplied with the full necessary accessories for installation (thermoretractable sheath, self-adhesive tape and hexagonal key).

- **for all types of coaxial cables**
- **Optimized connection**
- **Fast mounting**
- **MIL standard compliance**

Description



- 1) Connection coated wire (standard length 60 cm)
- 2) Stainless steel collar with self-expanding foam
- 3) «Hylomar» sealing paste
- 4) Tinned copper wire (for corrugated feeders)
- 5) Tinned copper moulded band
- 6) Stainless steel nuts and bolts

Characteristics

CITEL part number	Type of coaxial cable	External cable diameter (mm)
KMT09	LDF 1-50 - LDF 1RN-50	9
KMT11	RG213/4 - SCF38-50 CF14-50 - FSJ2-50 - LDF2-50 ETS2-50T	11
KMT14	SCF12-50 - UCF12-50 FSJ4-50B - FSJ4-75A	14
KMT16	HF5/8" - FT4-50A - HJ4-50	16
KMT17	LCF12-50 - LDF4-50 LDF4-75A	17
KMT23	LCF5/8" - LCF58-50 - HF5/8" HJ4.5-50 - LDF4.5	23
KMT28	LCF78-50 - HJ5-50/75 LDF5-50	28